

# Markscheme

May 2016

Mathematics

Standard level

Paper 2

16 pages

This markscheme is the property of the International Baccalaureate and must **not** be reproduced or distributed to any other person without the authorization of the IB Assessment Centre.

## Instructions to Examiners

### Abbreviations

- M** Marks awarded for attempting to use a valid **Method**; working must be seen.
- (M)** Marks awarded for a valid **Method**; may be implied by **correct** subsequent working.
- A** Marks awarded for an **Answer** or for **Accuracy**; often dependent on preceding **M** marks.
- (A)** Marks awarded for an **Answer** or for **Accuracy**; may be implied by **correct** subsequent working.
- R** Marks awarded for clear **Reasoning**.
- N** Marks awarded for **correct** answers if **no** working shown.
- AG** Answer given in the question and so no marks are awarded.

### Using the markscheme

#### 1 General

Mark according to RM assessor instructions

#### 2 Method and Answer/Accuracy marks

- Do **not** automatically award full marks for a correct answer; all working **must** be checked, and marks awarded according to the markscheme.
- It is generally not possible to award **M0** followed by **A1**, as **A** mark(s) depend on the preceding **M** mark(s), if any. An exception to this rule is when work for **M1** is missing, as opposed to incorrect (see point 4).
- Where **M** and **A** marks are noted on the same line, eg **M1A1**, this usually means **M1** for an **attempt** to use an appropriate method (eg substitution into a formula) and **A1** for using the **correct** values.
- Where there are two or more **A** marks on the same line, they may be awarded independently; so if the first value is incorrect, but the next two are correct, award **AOA1A1**.
- Where the markscheme specifies (**M2**), **N3**, etc., do **not** split the marks, unless there is a note.
- Most **M** marks are for a **valid** method, ie a method which can lead to the answer: it must indicate some form of progress towards the answer.

Once a correct answer to a question or part-question is seen, ignore further correct working. However, if further working indicates a lack of mathematical understanding do not award final **A1**.

#### 3 N marks

*If **no** working shown, award **N** marks for **correct** answers – this includes acceptable answers (see accuracy booklet). In this case, ignore mark breakdown (**M**, **A**, **R**). Where a student only shows a final incorrect answer with no working, even if that answer is a correct intermediate answer, award **N0**.*

- Do **not** award a mixture of **N** and other marks.
- There may be fewer **N** marks available than the total of **M**, **A** and **R** marks; this is deliberate as it penalizes candidates for not following the instruction to show their working.
- There may not be a direct relationship between the **N** marks and the implied marks. There are times when all the marks are implied, but the **N** marks are not the full marks: this indicates that we want to see some of the working, without specifying what.

- For consistency within the markscheme, **N** marks are noted for every part, even when these match the mark breakdown.
- If a candidate has incorrect working, which somehow results in a correct answer, do **not** award the **N** marks for this correct answer. However, if the candidate has indicated (usually by crossing out) that the working is to be ignored, award the **N** marks for the correct answer.

#### 4 Implied and must be seen marks

*Implied marks appear in **brackets** eg (M1).*

- Implied marks can only be awarded if the work is seen or if implied in subsequent working (a correct final answer does not necessarily mean that the implied marks are all awarded). There are questions where some working is required, but as it is accepted that not everyone will write the same steps, all the marks are implied, but the **N** marks are not the full marks for the question.
- Normally the correct work is seen in the next line.
- Where there is an (**M1**) followed by **A1** for each correct answer, if no working shown, one correct answer is sufficient evidence to award the (**M1**).

*Must be seen marks appear without **brackets** eg M1.*

- Must be seen marks can only be awarded if the work is seen.
- If a must be seen mark is not awarded because work is missing (as opposed to **M0** or **A0** for incorrect work) all subsequent marks may be awarded if appropriate.

#### 5 Follow through marks (only applied after an error is made)

*Follow through (FT) marks are awarded where an incorrect answer (final or intermediate) from one **part** of a question is used correctly in **subsequent** part(s) or subpart(s). Usually, to award **FT** marks, **there must be working present** and not just a final answer based on an incorrect answer to a previous part. However, if the only marks awarded in a subpart are for the **final** answer, then **FT** marks should be awarded if appropriate. Examiners are expected to check student work in order to award **FT** marks where appropriate.*

- Within a question part, once an **error** is made, no further **A** marks can be awarded for work which uses the error, but **M** and **R** marks may be awarded if appropriate. (However, as noted above, if an **A** mark is not awarded because work is missing, all subsequent marks may be awarded if appropriate).
- Exceptions to this rule will be explicitly noted on the markscheme.
- If the question becomes much simpler because of an error then use discretion to award fewer **FT** marks.
- If the error leads to an inappropriate value (eg probability greater than 1, use of  $r > 1$  for the sum of an infinite GP,  $\sin \theta = 1.5$ , non integer value where integer required), do not award the mark(s) for the final answer(s).
- The markscheme may use the word “**their**” in a description, to indicate that candidates may be using an incorrect value.
- If a candidate makes an error in one part, but gets the correct answer(s) to subsequent part(s), award marks as appropriate, unless the question says hence. It is often possible to use a different approach in subsequent parts that does not depend on the answer to previous parts.
- In a “show that” question, if an error in a previous subpart leads to not showing the required answer, do not award the final **A1**. Note that if the error occurs within the same subpart, the **FT** rules may result in further loss of marks.

## 6 Mis-read

If a candidate incorrectly copies information from the question, this is a mis-read (**MR**). A candidate should be penalized only once for a particular mis-read. Use the **MR** stamp to indicate that this is a misread. Do not award the first mark in the question, even if this is an **M** mark, but award all others (if appropriate) so that the candidate only loses one mark for the misread.

- If the question becomes much simpler because of the **MR**, then use discretion to award fewer marks.
- If the **MR** leads to an inappropriate value (eg probability greater than 1, use of  $r > 1$  for the sum of an infinite GP,  $\sin \theta = 1.5$ , non integer value where integer required), do not award the mark(s) for the final answer(s).
- Miscopying of candidates' own work does **not** constitute a misread, it is an error.

## 7 Discretionary marks (**d**)

An examiner uses discretion to award a mark on the rare occasions when the markscheme does not cover the work seen. In such cases the annotation **DM** should be used and a brief **note** written next to the mark explaining this decision.

## 8 Alternative methods

Candidates will sometimes use methods other than those in the markscheme. Unless the question specifies a method, other correct methods should be marked in line with the markscheme. If in doubt, contact your team leader for advice.

- Alternative methods for complete parts are indicated by **METHOD 1**, **METHOD 2**, etc.
- Alternative solutions for parts of questions are indicated by **EITHER . . . OR**. Where possible, alignment will also be used to assist examiners in identifying where these alternatives start and finish.

## 9 Alternative forms

Unless the question specifies otherwise, **accept** equivalent forms.

- As this is an international examination, accept all alternative forms of **notation**.
- In the markscheme, equivalent **numerical** and **algebraic** forms will generally be written in brackets immediately following the answer.
- In the markscheme, **simplified** answers, (which candidates often do not write in examinations), will generally appear in brackets. Marks should be awarded for either the form preceding the bracket or the form in brackets (if it is seen).

## 10 Calculators

A GDC is required for paper 2, but calculators with symbolic manipulation features (eg TI-89) are not allowed.

**Calculator notation** The mathematics SL guide says:

*Students must always use correct mathematical notation, not calculator notation.*

Do **not** accept final answers written using calculator notation. However, do not penalize the use of calculator notation in the working.

## 11 Style

The markscheme aims to present answers using good communication, eg if the question asks to find the value of  $k$ , the markscheme will say  $k = 3$ , but the marks will be for the correct value 3 –

*there is usually no need for the “ $k =$ ”. In these cases, it is also usually acceptable to have another variable, as long as there is no ambiguity in the question, eg if the question asks to find the value of  $p$  and of  $q$ , then the student answer needs to be clear. Generally, the only situation where the full answer is required is in a question which asks for equations – in this case the markscheme will say “must be an equation”.*

*The markscheme often uses words to describe what the marks are for, followed by examples, using the eg notation. These examples are not exhaustive, and examiners should check what candidates have written, to see if they satisfy the description. Where these marks are **M** marks, the examples may include ones using poor notation, to indicate what is acceptable. A valid method is one which will allow candidate to proceed to the next step eg if a quadratic function is given in factorised form, and the question asks for the zeroes, then multiplying the factors does not necessarily help to find the zeros, and would not on its own count as a valid method.*

## 12 Candidate work

If a candidate has drawn a line through work on their examination script, or in some other way crossed out their work, do not award any marks for that work.

Candidates are meant to write their answers to Section A on the question paper (QP), and Section B on answer booklets. Sometimes, they need more room for Section A, and use the booklet (and often comment to this effect on the QP), or write outside the box. That is fine, and this work should be marked.

The instructions tell candidates not to write on Section B of the QP. Thus they may well have done some rough work here which they assume will be ignored. If they have solutions on the answer booklets, there is no need to look at the QP. However, if there are whole questions or whole part solutions missing on answer booklets, please check to make sure that they are not on the QP, and if they are, mark those whole questions or whole part solutions that have not been written on answer booklets.

## 13. Diagrams

The notes on how to allocate marks for sketches usually refer to passing through particular points or having certain features. These marks can only be awarded if the sketch is approximately the correct shape. All values given will be an approximate guide to where these points/features occur. In some questions, the first **A1** is for the shape, in others, the marks are only for the points and/or features. In both cases, unless the shape is approximately correct, no marks can be awarded (unless otherwise stated). However, if the graph is based on previous calculations, **FT** marks should be awarded if appropriate.

## 14. Accuracy of Answers

*If the level of accuracy is specified in the question, a mark will be allocated for giving the final answer to the required accuracy. When this is not specified in the question, all numerical answers should be given exactly or correct to three significant figures.*

Do not accept unfinished numerical final answers such as  $3/0.1$  (unless otherwise stated). As a rule, numerical answers with more than one part (such as fractions) should be given using integers (eg  $6/8$ ). Calculations which lead to integers should be completed, with the exception of fractions which are not whole numbers.

Intermediate values do not need to be given to the correct three significant figures. But, if candidates work with rounded values, this could lead to an incorrect answer, in which case award **A0** for the final answer.

Where numerical answers are required as the **final** answer to a part of a question in the markscheme, the markscheme will show

a truncated 6 sf value

the exact value if applicable, the correct 3 sf answer

Units will appear in brackets at the end.

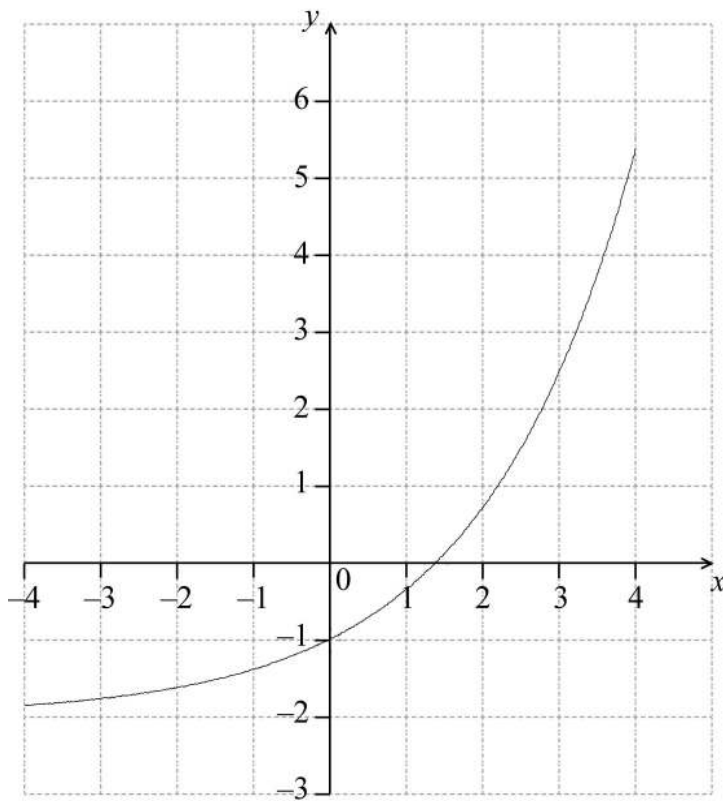
**Section A**

1. (a) valid approach (M1)  
 eg  $1.5 - 0.3, 1.5 - 2.7, 2.7 = 0.3 + 2d$   
 $d = 1.2$  A1 N2  
 [2 marks]
- (b) correct substitution into term formula (A1)  
 eg  $0.3 + 1.2(30 - 1), u_{30} = 0.3 + 29(1.2)$   
 $u_{30} = 35.1$  A1 N2  
 [2 marks]
- (c) correct substitution into sum formula (A1)  
 eg  $S_{30} = \frac{30}{2}(0.3 + 35.1), \frac{30}{2}(2(0.3) + 29(1.2))$   
 $S_{30} = 531$  A1 N2  
 [2 marks]
- Total [6 marks]**
- 
2. (a) evidence of choosing sine rule (M1)  
 eg  $\frac{a}{\sin A} = \frac{b}{\sin B}$   
 correct substitution (A1)  
 eg  $\frac{a}{\sin 1.75} = \frac{7}{\sin 0.82}$   
 $9.42069$   
 $BD = 9.42$  (cm) A1 N2  
 [3 marks]
- (b) evidence of choosing cosine rule (M1)  
 eg  $\cos B = \frac{d^2 + c^2 - b^2}{2dc}, a^2 = b^2 + c^2 - 2bc \cos B$   
 correct substitution (A1)  
 eg  $\frac{8^2 + 9.42069^2 - 12^2}{2 \times 8 \times 9.42069}, 144 = 64 + BD^2 - 16BD \cos B$   
 $1.51271$   
 $\hat{D}BC = 1.51$  (radians) (accept  $86.7^\circ$ ) A1 N2  
 [3 marks]
- Total [6 marks]**



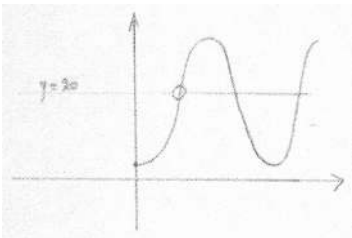
3. (a) (i)  $y = -1$  **A1** **N1**
- (ii) valid attempt to find  $x$ -intercept **(M1)**  
eg  $f(x) = 0$
- 1.38629 **A1** **N2**  
 $x = 2 \ln 2$  (exact), 1.39
- (iii)  $y = -2$  (must be equation) **A1** **N1**  
**[4 marks]**

(b)



**A1A1A1** **N3**  
**[3 marks]**

**Total [7 marks]**

4. (a) valid approach (M1)  
 eg  $h(0), -15\cos(1.2 \times 0) + 17, -15(1) + 17$   
 $h(0) = 2$  (m) A1 N2  
 [2 marks]
- (b) correct substitution into equation (A1)  
 eg  $20 = -15\cos 1.2t + 17, -15\cos 1.2k = 3$   
 valid attempt to solve for  $k$  (M1)  
 eg  $\cos 1.2k = -\frac{3}{15}$
- 
- 1.47679  
 $k = 1.48$  A1 N2  
 [3 marks]
- (c) recognize the need to find the period (seen anywhere) (M1)  
 eg next  $t$  value when  $h = 20$   
 correct value for period (A1)  
 eg period =  $\frac{2\pi}{1.2}, 5.23598, 6.7 - 1.48$   
 5.2 (min) (must be 1 dp) A1 N2  
 [3 marks]  
 Total [8 marks]
5. (a) 11 terms A1 N1  
 [1 mark]
- (b) valid approach (M1)  
 eg  $\binom{10}{r} (x^2)^{10-r} \left(\frac{2}{x}\right)^r, a^{10} b^0 + \binom{10}{1} a^9 b^1 + \binom{10}{2} a^8 b^2 + \dots$   
 Pascal's triangle to 11<sup>th</sup> row  
 valid attempt to find value of  $r$  which gives term in  $x^8$  (M1)  
 eg  $(x^2)^{10-r} \left(\frac{1}{x^r}\right) = x^8, x^{2r} \left(\frac{2}{x}\right)^{10-r} = x^8$   
 identifying required term (may be indicated in expansion) (A1)  
 eg  $r = 6, 5\text{th term}, 7\text{th term}$   
 correct working (may be seen in expansion) (A1)  
 eg  $\binom{10}{6} (x^2)^6 \left(\frac{2}{x}\right)^4, 210 \times 16$   
 3360 A1 N3  
 [5 marks]  
 Total [6 marks]

6. (a) 0.0668072  
 $P(S < 50) = 0.0668$  (accept  $P(S \leq 49) = 0.0548$ ) **A2 N2**  
**[2 marks]**
- (b) valid approach **(M1)**  
*Eg*  $P(S < 50) \times P(R < x)$   
 correct equation (accept any variable) **A1**  
*eg*  $P(S < 50) \times P(R < x) = 1\%$ ,  $0.0668072 \times p = 0.01$ ,  $P(R < x) = \frac{0.01}{0.0668}$   
 finding the value of  $P(R < x)$  **(A1)**  
*eg*  $\frac{0.01}{0.0668}$ , 0.149684  
 9.40553  
 $x = 9.41$  (accept  $x = 9.74$  from 0.0548) **A1 N3**
- Total [6 marks]**

7. correct approach **(A1)**  
*eg*  $s = \int v, \int_0^p 6t - 6dt$
- correct integration **(A1)**  
*eg*  $\int 6t - 6dt = 3t^2 - 6t + C, [3t^2 - 6t]_0^p$
- recognizing that there are two possibilities **(M1)**  
*eg* 2 correct answers,  $s = \pm 2, c \pm 2$
- two correct equations in  $p$  **A1A1**  
*eg*  $3p^2 - 6p = 2, 3p^2 - 6p = -2$
- 0.42265, 1.57735  
 $p = 0.423$  or  $p = 1.58$  **A1A1 N3**
- [7 marks]**

**Section B**

8. **Note:** There may be slight differences in answers, depending on which values candidates carry through in subsequent parts. Accept answers that are consistent with their working.

- (a) (i) valid approach **(M1)**  
 eg correct value for  $r$  (or for  $a$  or  $b$  seen in (ii))  
 $-0.994347$   
 $r = -0.994$  **A1** **N2**
- (ii)  $-1.58095, 33480.3$  **A1A1** **N2**  
 $a = -1.58, b = 33500$  **[4 marks]**
- (b) correct substitution into **their** regression equation **(A1)**  
 eg  $-1.58095(11000) + 33480.3$   
 $16089.85$  (16 120 from 3sf) **(A1)**  
 price = 16100 (dollars) (must be rounded to the nearest 100 dollars) **A1** **N3**  
**[3 marks]**
- (c) **METHOD 1**
- valid approach **(M1)**  
 eg  $P \times (\text{rate})^t$   
 rate = 0.95 (may be seen in their expression) **(A1)**  
 correct expression **(A1)**  
 eg  $16100 \times 0.95^6$   
 $11834.97$   
 $11800$  (dollars) **A1** **N2**
- METHOD 2**
- attempt to find all six terms **(M1)**  
 eg  $((16100 \times 0.95) \times 0.95) \dots \times 0.95$ , table of values  
 5 correct values (accept values that round correctly to the nearest dollar)  
 $15295, 14530, 13804, 13114, 12458$  **A2**
- $11835$   
 $11800$  (dollars) **A1** **N2**  
**[4 marks]**

continued...

Question 8 continued

(d) **METHOD 1**

correct equation

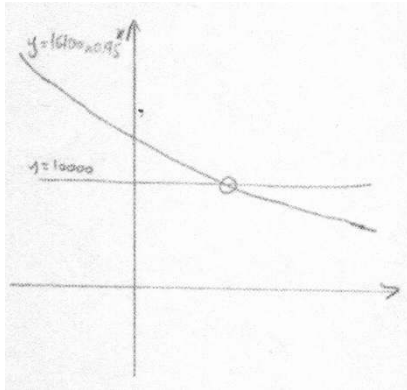
**(A1)**

eg  $16100 \times 0.95^x = 10000$

valid attempt to solve

**(M1)**

eg , using logs



9.28453

**(A1)**

year 2019

**A1**

**N2**

**METHOD 2**

valid approach using table of values

**(M1)**

**both** crossover values (accept values that round correctly to the nearest dollar)

**A2**

eg  $P = 10147$  (1 Jan 2019),  $P = 9639.7$  (1 Jan 2020)

year 2019

**A1**

**N2**

**[4 marks]**

**Total [15 marks]**

9. (a)  $y = 2$  (correct equation only) A2 N2  
[2 marks]

(b) valid approach (M1)

eg  $(x-1)^{-1} + 2, f'(x) = \frac{0(x-1)-1}{(x-1)^2}$

$-(x-1)^{-2}, f'(x) = \frac{-1}{(x-1)^2}$

A1 N2  
[2 marks]

(c) correct equation for the asymptote of  $g$   
eg  $y = b$  (A1)

$b = 2$  A1 N2  
[2 marks]

(d) correct derivative of  $g$  (seen anywhere) (A2)

eg  $g'(x) = -ae^{-x}$

correct equation (A1)

eg  $-e = -ae^{-1}$

7.38905

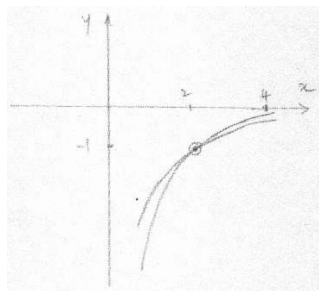
$a = e^2$  (exact), 7.39 A1 N2  
[4 marks]

(e) attempt to equate **their** derivatives (M1)

eg  $f'(x) = g'(x), \frac{-1}{(x-1)^2} = -ae^{-x}$

valid attempt to solve **their** equation (M1)

eg correct value outside the domain of  $f$  such as 0.522 or 4.51,



correct solution (may be seen in sketch) (A1)

eg  $x = 2, (2, -1)$

gradient is  $-1$  A1 N3  
[4 marks]

**Total [14 marks]**

10. (a) valid approach (M1)

eg B - A, AO + OB,  $\begin{pmatrix} -9 \\ 9 \\ -6 \end{pmatrix} - \begin{pmatrix} 1 \\ 5 \\ -7 \end{pmatrix}$

$\vec{AB} = \begin{pmatrix} -10 \\ 4 \\ 1 \end{pmatrix}$

A1 N2

[2 marks]

(b) valid approach (M1)

eg OC = OA + AC,  $\begin{pmatrix} 1+6 \\ 5-4 \\ -7+0 \end{pmatrix}$

C(7, 1, -7)

A1 N2

[2 marks]

(c) any correct equation in the form  $r = a + tb$  (accept any parameter for  $t$ )

where  $a$  is  $\begin{pmatrix} -9 \\ 9 \\ -6 \end{pmatrix}$ , and  $b$  is a scalar multiple of  $\begin{pmatrix} 6 \\ -4 \\ 0 \end{pmatrix}$

A2 N2

eg  $r = \begin{pmatrix} -9 \\ 9 \\ -6 \end{pmatrix} + t \begin{pmatrix} 6 \\ -4 \\ 0 \end{pmatrix}$ ,  $r = -9i + 9j - 6k + s(6i - 4j + 0k)$

[2 marks]

(d) correct magnitudes (A1)(A1)

eg  $\sqrt{(-10)^2 + (-4)^2 + 1^2}$ ,  $\sqrt{6^2 + (-4)^2 + (0)^2}$ ,  $\sqrt{10^2 + 4^2 + 1}$ ,  $\sqrt{6^2 + 4^2}$

$k = \frac{\sqrt{117}}{\sqrt{52}}$  (= 1.5) (exact)

A1 N3

[3 marks]

continued...

Question 10 continued

(e) correct interpretation of relationship between magnitudes **(A1)**

eg  $AB = 1.5AC, BD = 1.5AC, \sqrt{117} = \sqrt{52t^2}$

recognizing D can have two positions (may be seen in working) **R1**

eg  $\vec{BD} = 1.5\vec{AC}$  and  $\vec{BD} = -1.5\vec{AC}, t = \pm 1.5$ , diagram, two answers

valid approach (seen anywhere) **(M1)**

eg  $\vec{OD} = \vec{OB} + \vec{BD}, \begin{pmatrix} -9 \\ 9 \\ -6 \end{pmatrix} + t \begin{pmatrix} 6 \\ -4 \\ 0 \end{pmatrix}, \vec{BD} = k \begin{pmatrix} 6 \\ -4 \\ 0 \end{pmatrix}$

one correct expression for  $\vec{OD}$  **(A1)**

eg  $\vec{OD} = \begin{pmatrix} -9 \\ 9 \\ -6 \end{pmatrix} + 1.5 \begin{pmatrix} 6 \\ -4 \\ 0 \end{pmatrix}, \begin{pmatrix} -9 \\ 9 \\ -6 \end{pmatrix} - 1.5 \begin{pmatrix} 6 \\ -4 \\ 0 \end{pmatrix}$

$D = (0, 3, -6), D = (-18, 15, -6)$  (accept position vectors) **A1A1 N3**

**[6 marks]**

**Total [15 marks]**